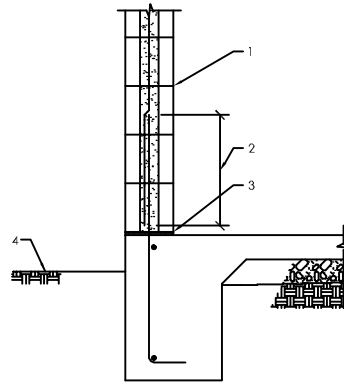


# Table of Contents

## AAC Foundation Details

Structural Foundation Details		
Section #	Section Description	Detail No.
10000	AAC Wall at Exterior Monolithic Concrete Footing	10001-10003
10100	AAC Wall at Exterior Concrete Stem Wall and Footing	10101-10102
10200	AAC Wall at Exterior CMU Stem Wall and Footing	10201-10206
10300	AAC Wall at Interior Monolithic Concrete Footing	10301-10302
10400	AAC Wall at Interior CMU Stem Wall at Crawlspace	10401-10402
10500	AAC Column at Stem Wall or Footing	10501-10502
10600	AAC Wall Non-Bearing at Interior Concrete Slab	10601
11000	Typical Reinforcing at AAC Wall - Elevation	11001-11007
12000	Special Jamb Reinforcing at AAC Wall - Plan	12001-12002
12100	AAC Column - Plan	12101

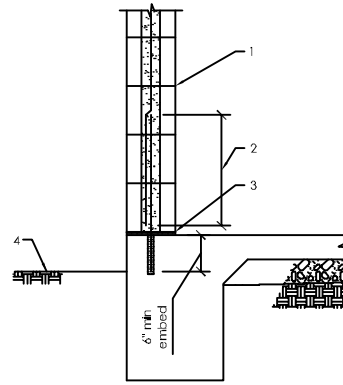
○ TYPICAL EXTERIOR ACC BLOCK WALL AT MONOLITHIC FOOTING 10001



- DETAIL KEY NOTES
- 1 AAC Block wall with vertical wall reinforcing in solid grouted cells where shown on plans
  - 2 Bar lap - see plans
  - 3 3/8" type "M" or "S" leveling mortar bed
  - 4 finished grade

Note:  
Monolithic concrete slab and footing, footing vertical dowels and reinforcing - by others

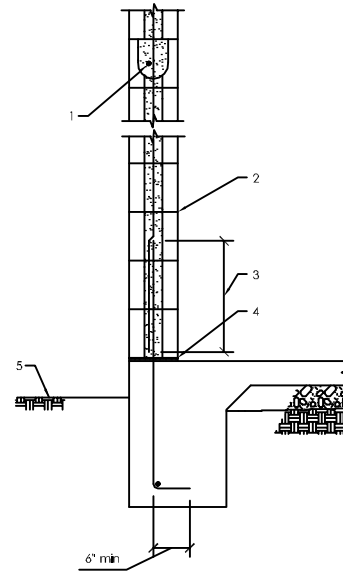
○ TYPICAL EXTERIOR ACC BLOCK WALL AT MONOLITHIC FOOTING 10002



- DETAIL KEY NOTES
- 1 AAC Block wall with vertical wall reinforcing in solid grouted cells where shown on plans
  - 2 Bar lap - see plans
  - 3 3/8" type "M" or "S" leveling mortar bed
  - 4 finished grade

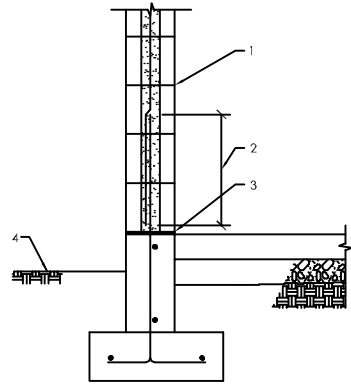
Note:  
Monolithic concrete slab and footing, footing vertical dowels and reinforcing - by others

○ TYPICAL EXTERIOR ACC BLOCK WALL AT MONOLITHIC FOOTING 10003



- DETAIL KEY NOTES
- 1 #5 Continuous horizontal reinforcing in solid grouted AAC "U" block
  - 2 AAC Block wall with vertical wall reinforcing in solid grouted cells where shown on plans
  - 3 Bar lap - see plans
  - 4 3/8" type "M" or "S" leveling mortar bed
  - 5 finished grade

Note:  
Monolithic concrete slab and footing, footing vertical dowels and reinforcing - by others

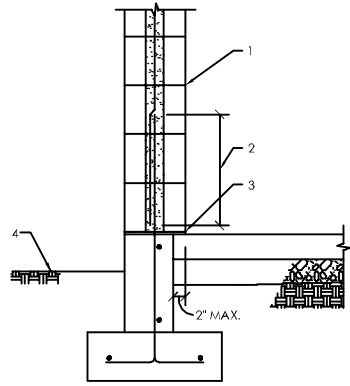


- DETAIL KEY NOTES
- 1 AAC Block wall with vertical wall reinforcing in solid grouted cells where shown on plans
  - 2 Bar lap - see plans
  - 3 3/8" type "M" or "S" leveling mortar bed
  - 4 finished grade

Note:  
Concrete slab, concrete footing, concrete stem wall, footing vertical dowels and reinforcing - by others

TYPICAL EXTERIOR  
ACC BLOCK WALL AT CONCRETE STEM WALL AND FOOTING

10101



- DETAIL KEY NOTES
- 1 AAC Block wall with vertical wall reinforcing in solid grouted cells where shown on plans
  - 2 Bar lap - see plans
  - 3 3/8" type "M" or "S" leveling mortar bed
  - 4 finished grade

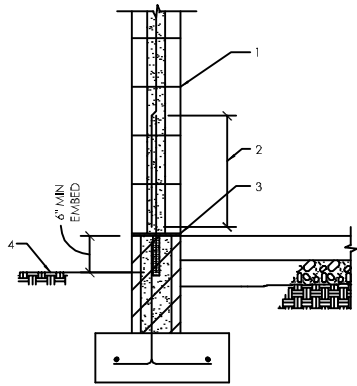
Note:  
Concrete slab, concrete footing, concrete stem wall, footing vertical dowels and reinforcing - by others

TYPICAL EXTERIOR  
ACC BLOCK WALL AT CONCRETE STEM WALL AND FOOTING

10102

TYPICAL EXTERIOR AAC BLOCK WALL AT CMU STEM WALL AND CONCRETE FOOTING

10201



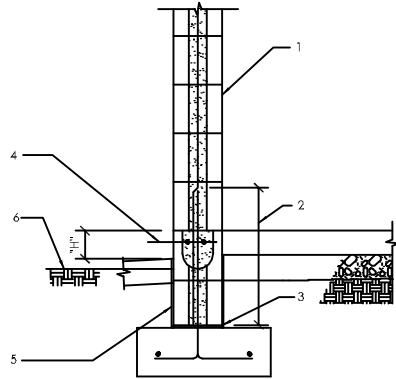
DETAIL KEY NOTES

- 1 AAC block wall with vertical wall reinforcing in solid grouted cells where shown on plans
- 2 Bar lap - see plans
- 3 3/8" type "M" or "S" leveling mortar bed
- 4 Finished grade

Note:  
Concrete slab, concrete footing, CMU stem wall, footing vertical dowels and reinforcing - by others

TYPICAL EXTERIOR AAC BLOCK WALL AT AAC STEM WALL AND CONCRETE FOOTING

10202



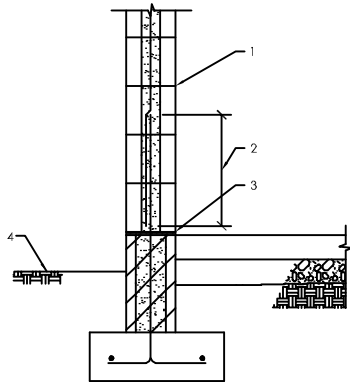
DETAIL KEY NOTES

- 1 AAC block wall with vertical wall reinforcing in solid grouted cells where shown on plans
- 2 Bar lap - see plans
- 3 3/8" type "M" or "S" leveling mortar bed
- 4 2 #4 continuous horizontal reinforcing in solid grouted AAC "U" block
- 5 Water proofing membrane typical at all AAC below grade
- 6 Finished grade

Note:  
Concrete slabs, concrete footing, footing vertical dowels and reinforcing - by others

TYPICAL EXTERIOR AAC BLOCK WALL AT CMU STEM WALL AND CONCRETE FOOTING

10203



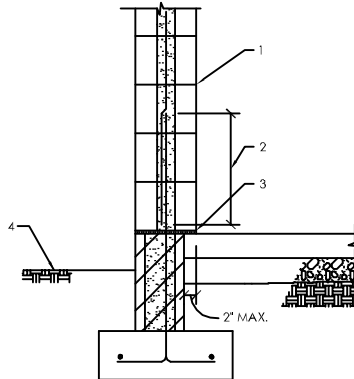
DETAIL KEY NOTES

- 1 AAC Block wall with vertical wall reinforcing in solid grouted cells where shown on plans
- 2 Bar lap - see plans
- 3 3/8" type "M" or "S" leveling mortar bed
- 4 Finished grade

Note:  
Concrete slab, concrete footing, CMU stem wall, footing vertical dowels and reinforcing - by others

TYPICAL EXTERIOR AAC BLOCK WALL AT CMU STEM WALL AND CONCRETE FOOTING

10204



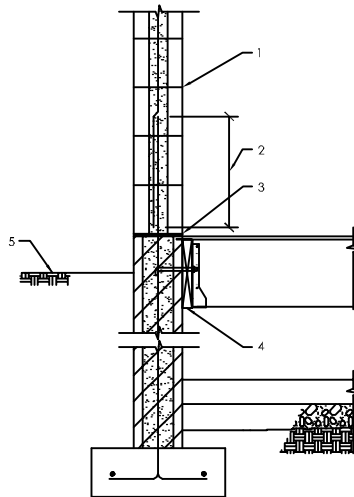
DETAIL KEY NOTES

- 1 AAC Block wall with vertical wall reinforcing in solid grouted cells where shown on plans
- 2 Bar lap - see plans
- 3 3/8" type "M" or "S" leveling mortar bed
- 4 Finished grade

Note:  
Concrete slab, concrete footing, CMU stem wall, footing vertical dowels and reinforcing - by others

TYPICAL EXTERIOR AAC BLOCK WALL AT CMU BASEMENT WALL AND CONCRETE FOOTING

10205



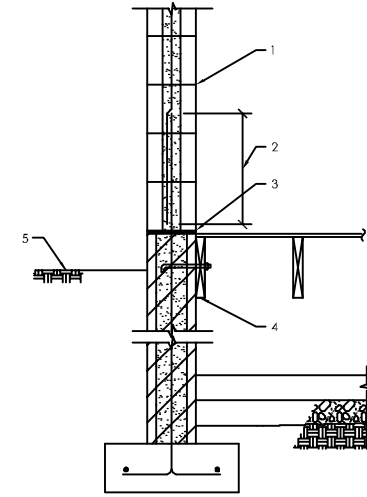
DETAIL KEY NOTES

- 1 AAC block wall with vertical wall reinforcing in solid grouted cells where shown on plans
- 2 Bar lap - see plans
- 3 3/8" type "M" or "S" leveling mortar bed
- 4 Wood ledger and connection - See ledger schedule on plans
- 5 Finished grade

Note:  
Concrete footing, CMU stem wall, concrete slab, floor sheathing and framing, Simpson hangers, footing vertical dowels and reinforcing - by others

TYPICAL EXTERIOR AAC BLOCK WALL AT CMU BASEMENT WALL AND CONCRETE FOOTING

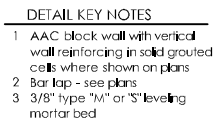
10206



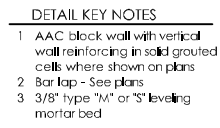
DETAIL KEY NOTES

- 1 AAC block wall with vertical wall reinforcing in solid grouted cells where shown on plans
- 2 Bar lap - See plans 2' - min
- 3 3/8" type "M" or "S" leveling mortar bed
- 4 Wood ledger and connection - See ledger schedule on plans
- 5 Finished grade

Note:  
Concrete footing, CMU stem wall, concrete slab, floor sheathing and framing, footing vertical dowels and reinforcing - by others



TYPICAL INTERIOR ACC BLOCK WALL AT MONOLITHIC FOOTING

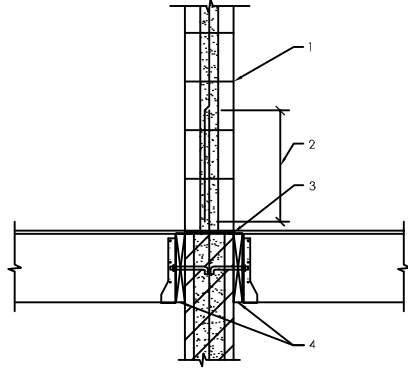


TYPICAL INTERIOR ACC BLOCK WALL AT MONOLITHIC FOOTING



TYPICAL INTERIOR  
AAC BLOCK WALL AT CMU CRAWLSPACE WALL

10401



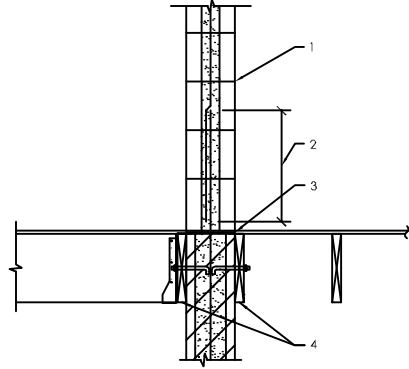
- DETAIL KEY NOTES
1. ACC block wall with vertical wall reinforcing in solid grouted cells where shown on plans
  2. Bar lap - see plans
  3. 3/8" type "M" or "S" leveling mortar bed
  4. Wood ledger and connection - see ledger schedule on plans

Note:  
Concrete footing, CMU crawlspace wall, floor sheathing and framing, Simpson hangers, footing vertical dowels and reinforcing - by others



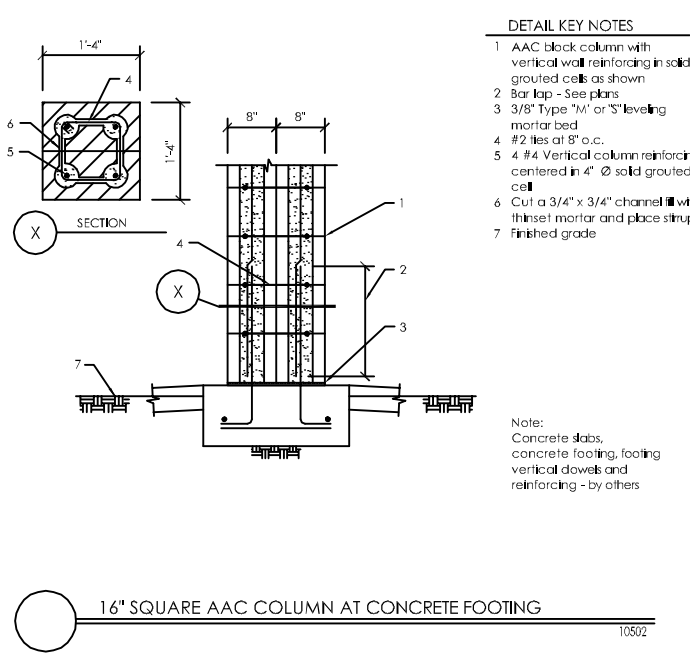
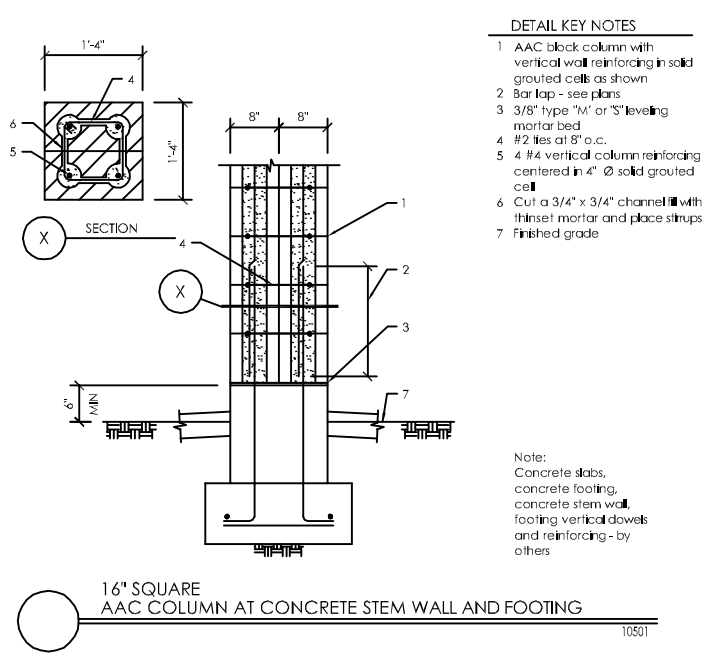
TYPICAL INTERIOR  
AAC BLOCK WALL AT CMU CRAWLSPACE WALL

10402

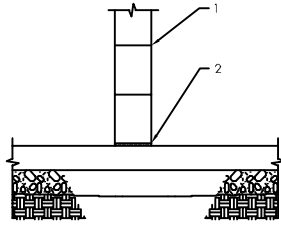


- DETAIL KEY NOTES
1. ACC Block wall with vertical wall reinforcing in solid grouted cells where shown on plans
  2. Bar lap - see plans
  3. 3/8" type "M" or "S" leveling mortar bed
  4. Wood ledger and connection - see ledger schedule on plans

Note:  
Concrete footing, CMU crawlspace wall, floor sheathing and framing, Simpson hangers, footing vertical dowels and reinforcing - by others



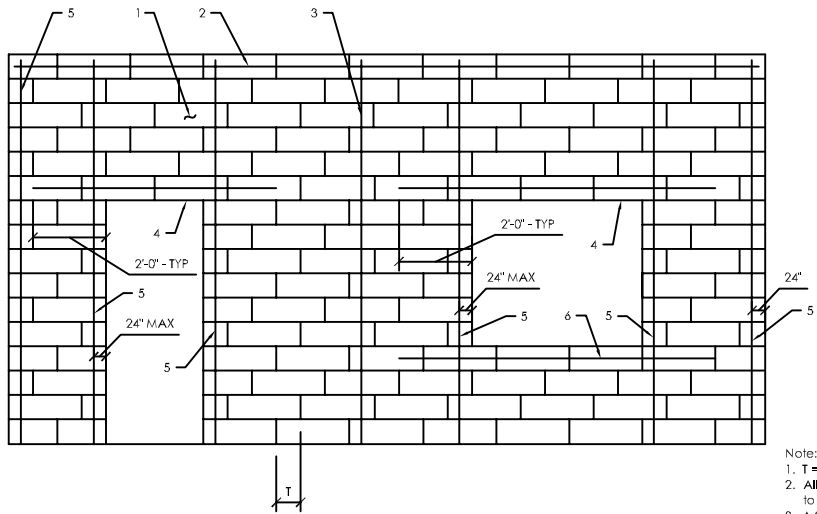
- DETAIL KEY NOTES
- 1 AAC non-bearing block wall
  - 2 3/8" type "M" or "S" leveling mortar bed



Note:  
Concrete slab on grade  
- by others

10601-  
E-CRETE





ELEVATION - AAC BLOCK WALL REINFORCING AT OPENINGS

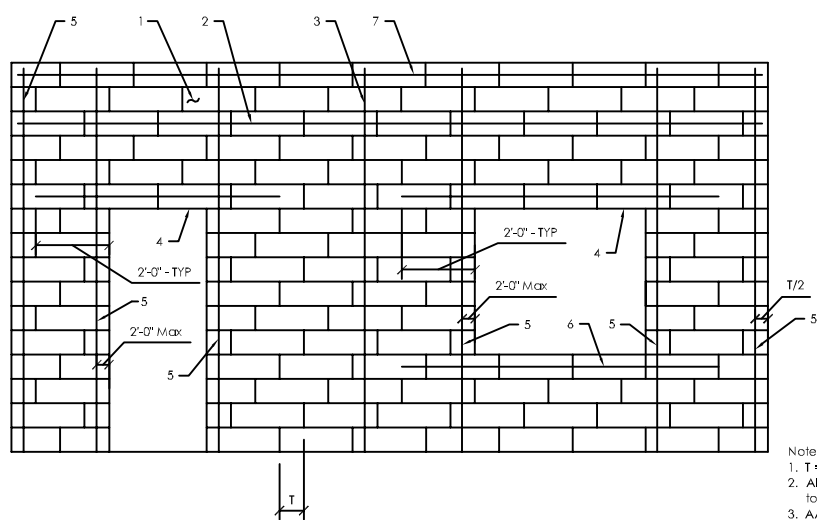
11001

DETAIL KEY NOTES

- 1 AAC block wall
- 2 #4 horizontal reinforcing in AAC "U" block - typ at roof line u.n.o. on plans
- 3 1 #4 centered in 4"  $\emptyset$  cell vertical wall reinforcing where shown on plans
- 4 AAC block lintel - see plans and AAC block lintel schedule
- 5 1 #4 centered in 4"  $\emptyset$  cell vertical wall reinforcing within 24" from end of wall opening and at wall corners - typ u.n.o. on plans
- 6 1 #4 horizontal reinforcing in solid grouted AAC "U" block - extend 24" past each end of opening

Note:

1. T = Wall thickness.
2. All cells with vertical reinforcing to be solid grouted.
3. AAC block to lap a distance of 1.
4. See GSN (General Structural Notes) for bar lap, grouting and material requirements.



ELEVATION - AAC BLOCK WALL REINFORCING AT OPENINGS

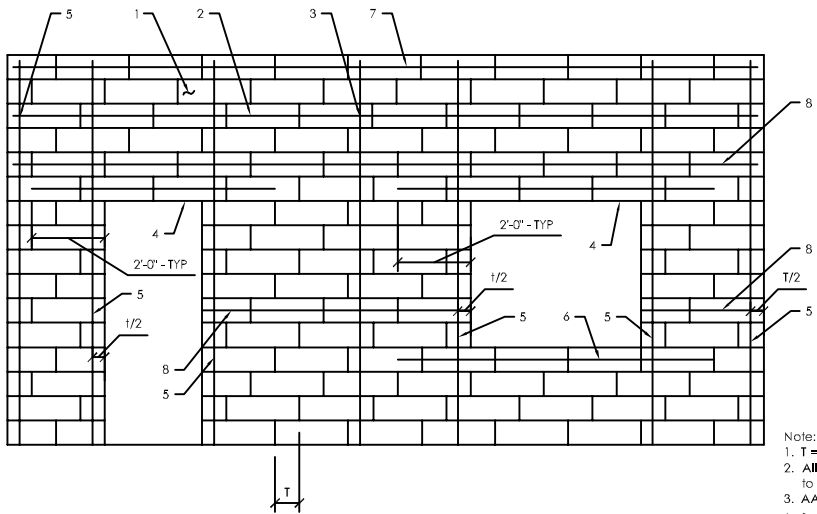
11002

DETAIL KEY NOTES

- 1 AAC block
- 2 #4 horizontal reinforcing in AAC "U" block - typ at roof line u.n.o. on plans
- 3 Additional vertical wall reinforcing where shown on plans
- 4 AAC block lintel - see plans and AAC block lintel schedule
- 5 1 #4 centered in 4"  $\emptyset$  cell vertical wall reinforcing within 24" of each end of wall opening - typ u.n.o. on plans
- 6 1 #4 horizontal reinforcing in solid grouted AAC "U" block - extend 24" past each end of opening
- 7 1 #4 horizontal reinforcing in solid grouted AAC "U" block at top of parapet

Note:

1. T = wall thickness.
2. All cells with vertical reinforcing to be solid grouted.
3. AAC block to lap a distance of 1.
4. See GSN (General Structural Notes) for bar lap, grouting and material requirements.



ELEVATION - AAC BLOCK WALL REINFORCING AT OPENINGS

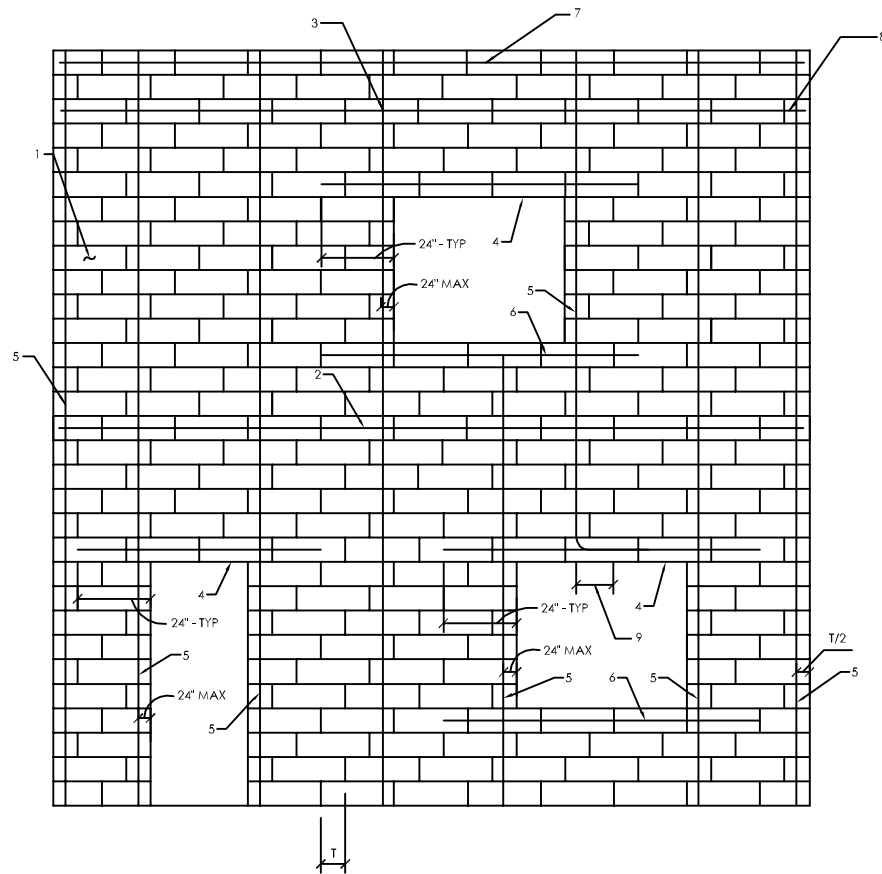
11003

DETAIL KEY NOTES

- 1 AAC block wall
- 2 #4 horizontal reinforcing in AAC "U" block - typ at roof line u.n.o. on plans
- 3 1 #4 centered in 4"  $\emptyset$  cell vertical wall reinforcing at 4'-0" o.c. max u.n.o.
- 4 AAC block lintel - see plans and AAC block lintel schedule
- 5 1 #4 centered in 4"  $\emptyset$  cell vertical wall reinforcing at each end of wall opening - typ u.n.o. on plans
- 6 1 #4 horizontal reinforcing in solid grouted AAC "U" block - extend 24" past each end of opening
- 7 1 #4 horizontal reinforcing in solid grouted AAC "U" block at top of parapet
- 8 Horizontal shear reinforcing as required - see plans

Note:

1. T = Wall thickness.
2. All cells with vertical reinforcing to be solid grouted.
3. AAC block to lap a distance of 1.
4. See GSN (General Structural Notes) for bar lap, grouting and material requirements.



ELEVATION - AAC BLOCK WALL REINFORCING AT OPENINGS

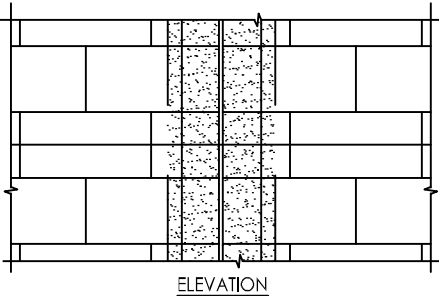
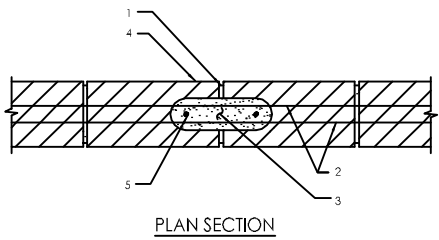
11004

DETAIL KEY NOTES

- 1 AAC block wall
- 2 #4 horizontal reinforcing in solid grouted AAC "U" block - typ at floor line u.n.o. on plans
- 3 1 #4 centered in 4"  $\emptyset$  cell vertical wall reinforcing within 24" from end of wall opening. Reinforcing to be continuous to foundation or to AAC lintel below
- 4 AAC block lintel - see plans and AAC block lintel schedule
- 5 1 #4 centered in 4"  $\emptyset$  cell vertical wall reinforcing within 24" from end of wall opening, wall corners, and at end of wall - typ u.n.o. on plans
- 6 1 #4 horizontal reinforcing in solid grouted AAC "U" block - extend 24" past each end of opening
- 7 1 #4 horizontal reinforcing in solid grouted AAC "U" block - typical at top of parapet
- 8 2 #4 horizontal reinforcing in solid grouted AAC "U" block at roof line typical unless noted otherwise
- 9 Standard 90° ACI bend

Note:

1. T = Wall thickness.
2. All cells with vertical reinforcing to be solid grouted.
3. AAC block to lap a distance of 1.
4. See GSN (General Structural Notes) for bar lap, grouting and material requirements.

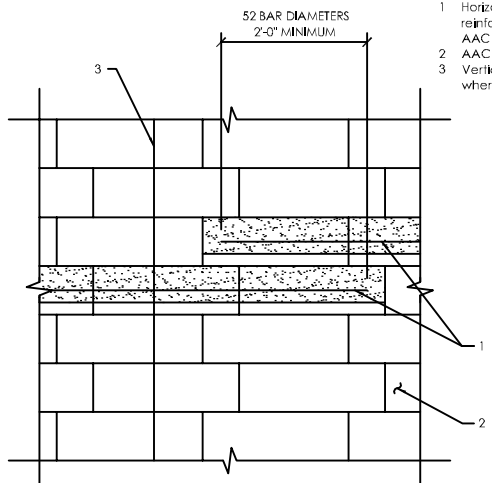


PLAN VIEW - TYPICAL AAC MASONRY CONTROL JOINT

11005

DETAIL KEY NOTES

- 1 Rake joint each side and caulk
- 2 Wrap reinforcing with duct tape for 1'-4" each side of MCJ - Do not lap splice bond beam bars within 8'-0" of MCJ
- 3 Grout solid
- 4 AAC open end block wall
- 5 One vertical bar each side of control joint to match vertical wall reinforcing



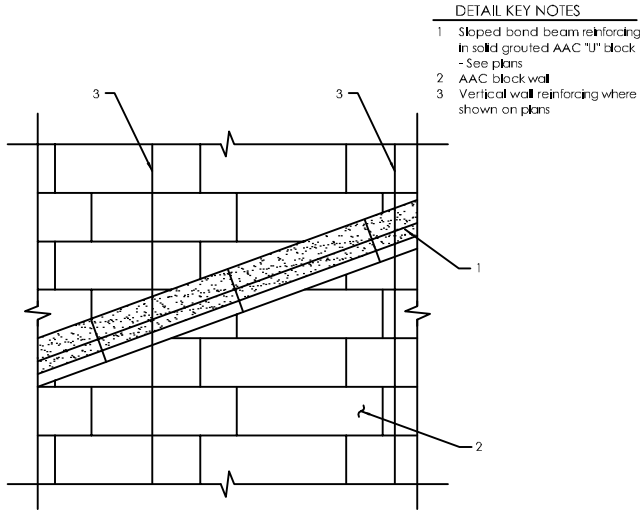
STEPPED AAC BLOCK WALL BOND BEAM

11006

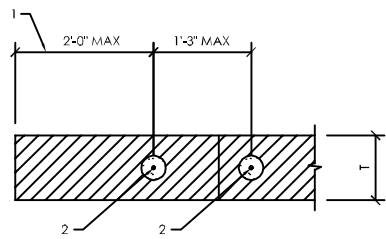
DETAIL KEY NOTES

- 1 Horizontal bond beam reinforcing in solid grouted AAC "U" block - see plans
- 2 AAC block wall
- 3 Vertical wall reinforcing where shown on plans

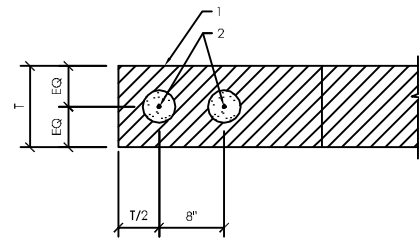
 SLOPED AAC BLOCK WALL BOND BEAM  
11007



- DETAIL KEY NOTES
- 1 Locate vertical reinforcing as to clear wood header - see details as occurs
  - 2 #5 vertical wall reinforcing centered in cell



- DETAIL KEY NOTES
- 1 10" AAC Wall (12" above header height) 8" AAC wall at detail A
  - 2 #5 vertical wall reinforcing centered in 4" Ø solid grouted cell



JAMB REINFORCING WHERE SHOWN ON PLANS

12001

JAMB REINFORCING WHERE SHOWN ON PLANS

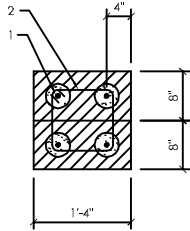
AS NOTED

12002

- DETAIL KEY NOTES
- 1

1 #4 vertical in each corner  
in 4" Ø solid grouted cell  
- 4 total
- 2

#2 ties at 16" o.c.



AAC COLUMN

12101

12101-

E-CRETE